

## General Equipment Info

**Year**

**Make**

Doosan

**Model**

DX210W

**Hours**

2,276

**Serial Number**

DHKCEWAEAC5006406

**Machine Options**

Cab, Heat, A/C, Aux. Hydraulics, Quick Coupler, Backup Camera, Digging Bucket

**Address**

**City**

Regina

**Province/State**

Sk

**Inspector Name**

Ryan

**Date of Inspection**

05-09-2024

**Hour Meter – Idle Hours**

**Serial Number Plate**



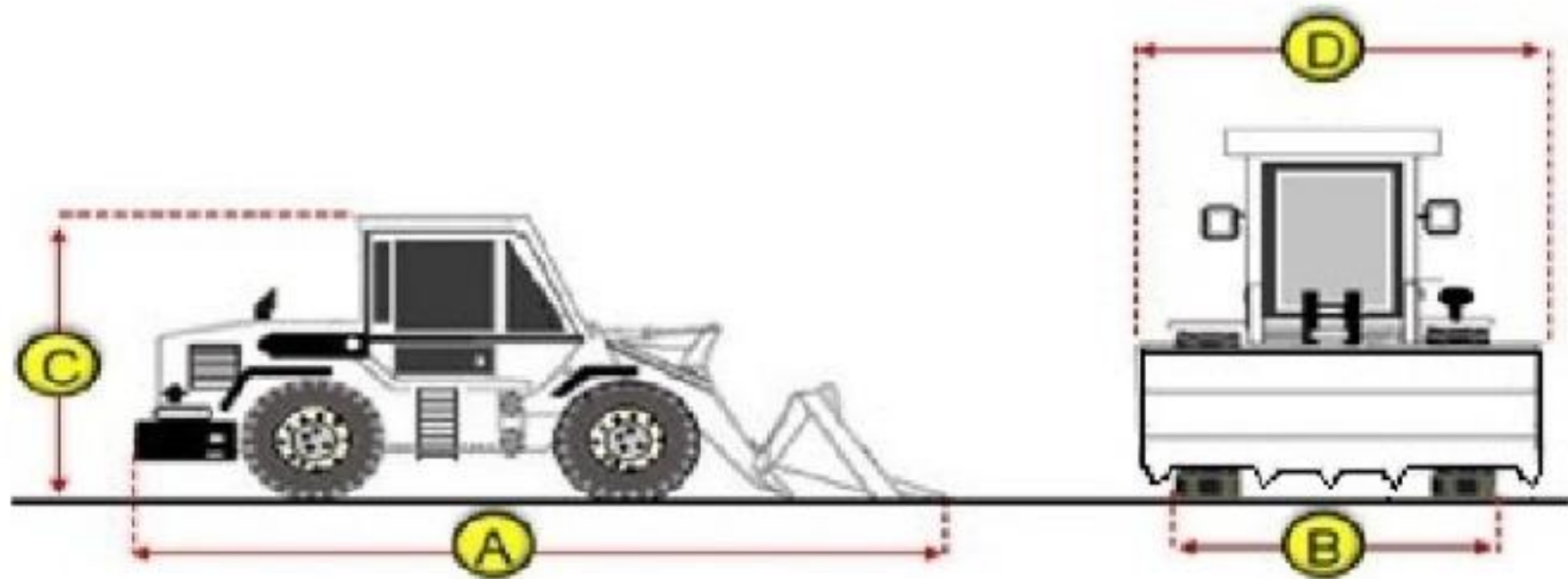
**Hour Meter – SMU Hours**





## Dimensions

### Measurement Guide



- A. Length (ft and inches)
- B. Width (ft and inches)
- C. Height (ft and inches)
- D. Shipping Width (ft and inches)
- Operational Weight (lbs)

## Exterior Condition

**Coupler Style**  
Pin Grabber

**Exterior Walkaround Photos**



**Coupler Brand**

Ami

**Coupler Width (Between bucket ears)**

**Stick Width (Between bucket ears)**

16.75

**Pin Size**

**Center to Center of Bucket Pins**

**Excavator Boom Length**

**Loader Bucket Pin Height**

**Width Between Bucket Ears**

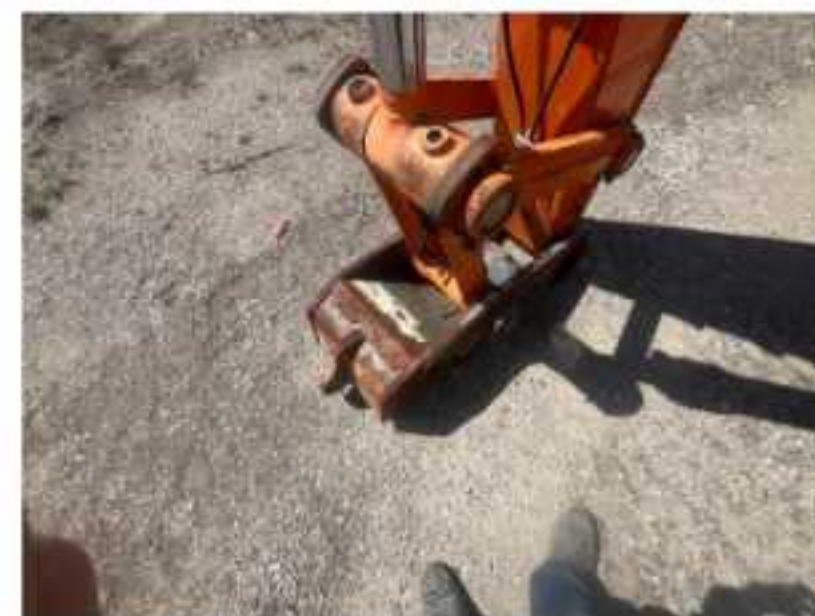
**Top Pin Size**

**Bottom Pin Size**

**Center to Center of Coupler Pins**



**Coupler Photos**





## Hard Bar Photos

## Close-up Exterior Photos







### Chassis Photos







## Undercarriage Condition

### Undercarriage Type

Wheels

### Tire Size

### Tire Brand

### Front Left Tire - Ratio Remaining

50%

### Rear Left Tire - Ratio Remaining

50%

### Front Right Tire - Ratio Remaining

50%

### Rear Right Tire - Ratio Remaining

50%

### Wheel and Tire Condition

Heavy wear, cuts, or weather cracking

### Left Track - Ratio Remaining

### Right Track - Ratio Remaining

### Track Condition

### Pad Width Instructions

Take photo of tape measure on pad/grousers

### Front Left Tire - Photos



### Rear Left Tire - Photos





**Front Right Tire - Photos**



**Rear Right Tire - Photos**



**Left Track - Photos**

**Right Track - Photos**

**Pad Width Photo**



## Interior Condition

### Interior Condition



## Engine Condition

### Engine Info

Gather general engine information if available (i.e., Make, Model, Cylinders, type, Horsepower).

### Emissions Tier

### Engine Serial Number

### Engine Compartment Photos



**Unusual Noises (Upon Start-up, Idle, Shutdown)**

No

**Engine Exhaust Color**

Clear

**Engine Type (Make, Model, Cylinders, HP)**

Doosan

**Blow-by (Visual Observation Check)**

No

**Engine Smoke (Upon Start-up, Idle, Shutdown)**

No



**Active Engine Codes**

**A/C Compressor**

**Engine Data Plate**



**EPA Label**





### Hydraulic Pumps / Motors Condition

Hydraulic pumps & motors are dry and in good condition

### Hydraulic Lines/Fittings Condition

Hydraulic Lines & Fittings are clean and in good condition

### Hydraulic Cylinders Condition

Hydraulic cylinders are clean and in good condition

### Hydraulic Cylinder Photos



### Hydraulic System Photos







Hydraulic Leaks Photos

## Drivetrain

### Hydrostatic Transmission?

#### 2 Speed?

Yes

#### Drive

4WD

#### Transmission Condition

Good forward and reverse function

#### Axle Condition

No leaks, unusual noises or vibrations

#### Parking Brake Function

Strong, holds machine

### Drivetrain Photos

## Function Check



### Hydraulic Operation

5

### Service Brakes Operation

5

### Electronics Operation

5

### Forward / Reverse

5

### Attachment Operation

5

### Park Brake Operation

5

## Attachments

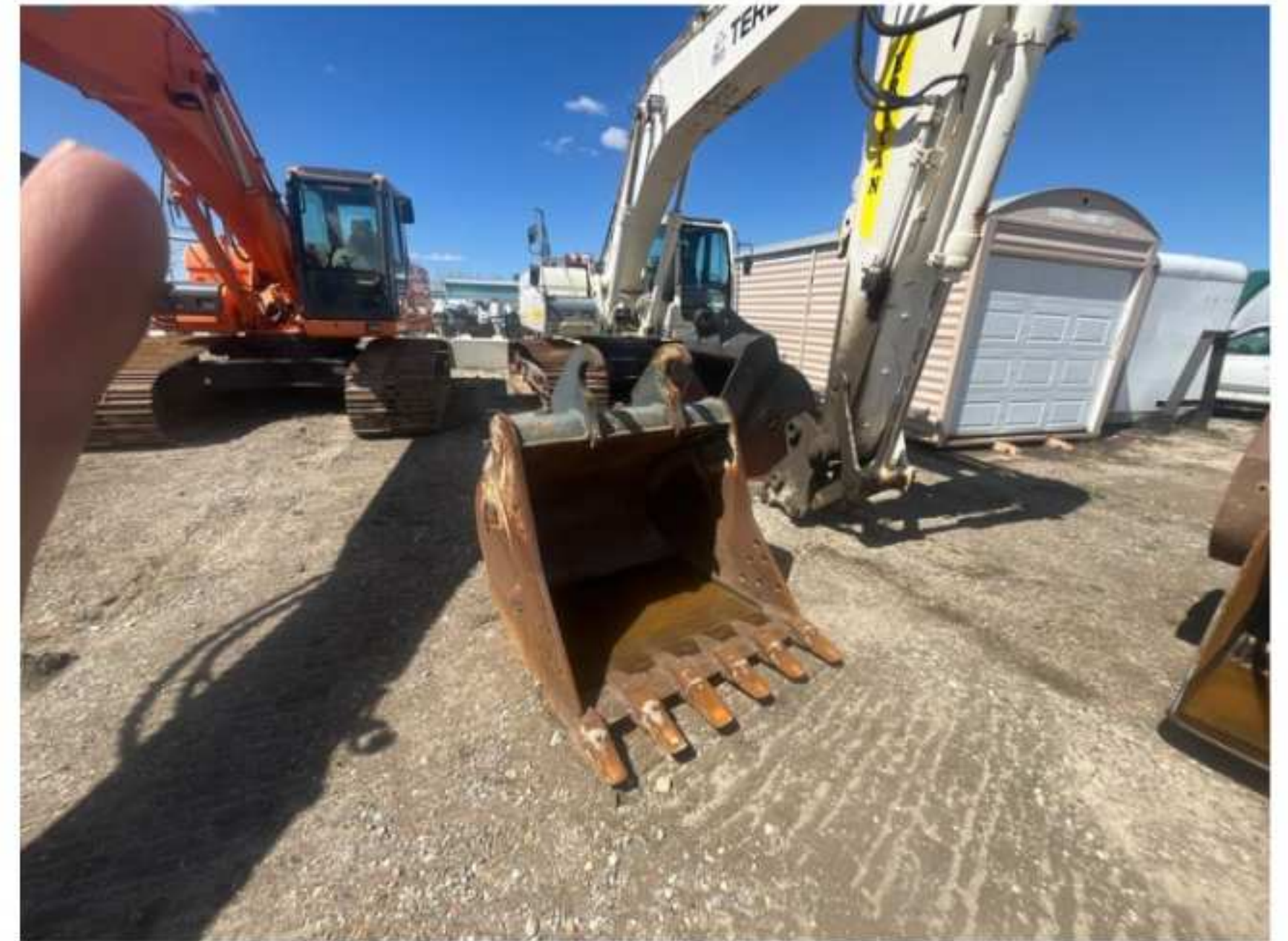
### Attachment Type

### Attachment Make

### Attachment Size / Specs

### Attachment Serial Number

### Attachment Photos



### Attachment Serial Number Photo



### Attachment Width Photo



